



**The HON Company Introduces REPREVE®  
Recycled Yarns to its Seating Fabrics**

*The Use of New 100-Percent Recycled Polyester Yarns  
Fits Comfortably, and Fashionably, into HON's Ongoing Environmental Journey*

Muscatine, IA – October 2008 – Creating an environmentally responsible office doesn't mean you have to sacrifice style for the sake of sustainability. In fact, a new yarn made from pre-consumer and post-consumer waste adds a bit of runway style to office seating from The HON Company.

HON offers REPREVE®, a 100-percent recycled fiber, in two of its seating fabrics, Gio, which uses 44 percent REPREVE fiber and Charged, which uses 51 percent REPREVE fiber. These environmentally responsible fabrics are available on more than ninety percent of HON's seating line including Versant™, Cambia™, Pillow-Soft™, Park Avenue™, Alaris™, F3™, and Unanimous®.

Made by Unifi, a world leader in producing polyester and nylon yarns, REPREVE yarns are made from pre-consumer polyester fiber waste and post-consumer plastics, including PET water and soda bottles. REPREVE can be found in home and contract furnishings, apparel, legwear and sewing thread, as well as other applications. Originally offered only in polyester, REPREVE is now also available in nylon 6,6. Fabrics made with REPREVE are available in the following colors:

- Onyx



- Cherry



- Coffee



- Ocean



- Blueberry

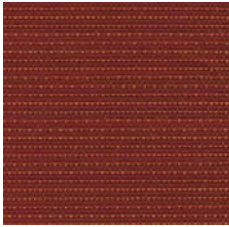
- Carob



- Autumn



- Lagoon



- Parsley



- Habanero



- Cashew



- Sprout



- Jet



- Cardinal



"These two fabrics made with REPREVE enhance our commitment to sustainability and the environment," says Kandice Tjebkes, HON's manager, surface materials. "We take our eco-leadership position seriously, as does Unifi and the fabric mills that convert REPREVE into fashion textiles for contract furniture. It's a perfect combination, and we're thrilled we can offer these stylishly sustainable fabrics exclusively in our seating lines."

HON and Unifi share a strong sense of environmental responsibility and believe recycling and sustainable business practices simply are the right thing to do. Both companies have long pursued an environmental journey and consistently look for ways to reduce their impact on the environment in their processes and products.

To raise the bar on their sustainability claims, both companies make third-party product certification part of their environmental journeys. In the same manner as many HON products, REPREVE has undergone detailed analysis and testing by Scientific Certification Systems (SCS), a leading third-party certifier and standards developer of environmental and sustainability claims. REPREVE has received SCS certification for the claim of 100 percent recycled content. This is a perfect complement to the fact that 90 percent of HON's total office seating line is certified SCS Indoor Advantage or Indoor Advantage Gold, meeting the most rigorous standards for indoor air quality.

For more information, visit [www.HON.com](http://www.HON.com).

###

### **About The HON Company**

The HON Company is a leader in the design and manufacturing of workplace furniture including chairs, storage, panel systems, tables and desks. Headquartered in Muscatine, Iowa, The HON Company has numerous manufacturing facilities strategically located throughout the United States, and markets its products through a nationwide network of dealers and retailers. The HON Company is an operating company of HNI Corporation (formerly HON INDUSTRIES). For more information, visit [www.HON.com](http://www.HON.com).

### **About Unifi:**

Unifi, Inc. (NYSE: UFI) is a diversified producer and processor of multi-filament polyester and nylon textured yarns and related raw materials. The Company adds value to the supply chain and enhances consumer demand for its products through the development and introduction of branded yarns that provide unique performance, comfort and aesthetic advantages. Key Unifi brands include, but are not limited to: AIO® - all-in-one performance yarns, SORBTEK®, A.M.Y.®, MYNX® UV, REPREVE®, REFLEXX®, MICROVISTA® and SATURA®. Unifi's yarns and brands are readily found in home furnishings, apparel, legwear, and sewing thread, as well as industrial, automotive, military, and medical applications. For more information about Unifi, visit [www.unifi.com](http://www.unifi.com), or to learn more about REPREVE®, visit the new website [www.repreve.com](http://www.repreve.com).